


## Technical specifications

Intended use	Osteoplasty			
Indications for use	Osteoplasty			
Description	Diamond-coated ball for osteoplasty in vestibular and palatine zones and the reduction of exotosis and all other bone irregularities			
Tip type	Diamond-coated			
Allergenic factor	Tip made of surgical stainless steel as per ASTM F899 - 12b			
	Surgical stainless steel contains: <ul style="list-style-type: none"><li>• nickel</li><li>• chromium</li></ul>			
	Diamond polishing crimping binder alloy contains: <ul style="list-style-type: none"><li>• nickel</li></ul>			
Commercial reference	CE1 II : F87551			
Medical class	Class of medical device: IIa according to 93/42/EEC directive			
Adjustments	Ultrasonic generators	Maximum mode	Maximum fine setting	Irrigation
	Implant Center II Piezotome 2 Piezotome Cube Piezotome Solo LED	D1	1-3	60-80 ml/min

## Service life

As it is not possible to establish a maximum number of uses (that may be determined by many parameters such as duration of use, hardness of tissue, the force applied, wear), we recommend that medical devices being routinely used are replaced at least once a year. Replace the medical device if the tip does not vibrate at the expected frequency, the treatment is not progressing as normal and is taking longer or is at a standstill.

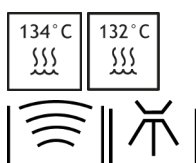
## Associated documentation

Document title	References
Consulting electronic user instructions	J00007
Cleaning, disinfection and sterilisation instructions for tips	J02001
Crown Extension Kit clinical tips	J57341
Dental surgery ultrasonic generator power settings table	J58010
General instructions relating to the complete range of dental surgery tips	J87301

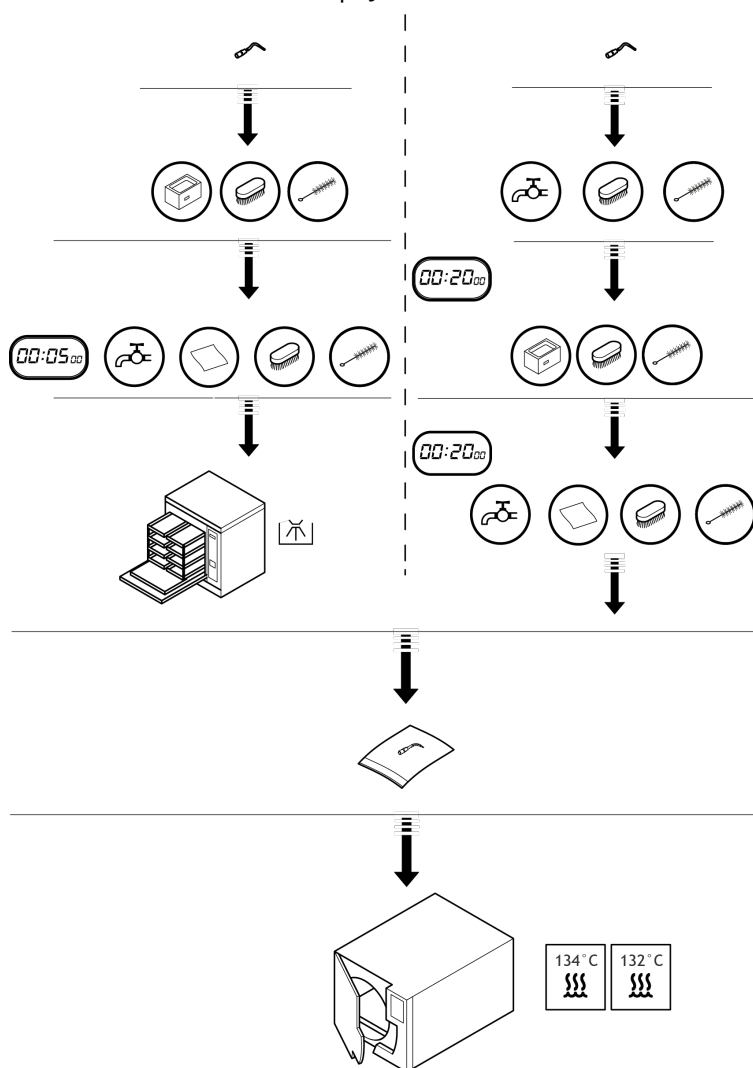
## Sterilisation



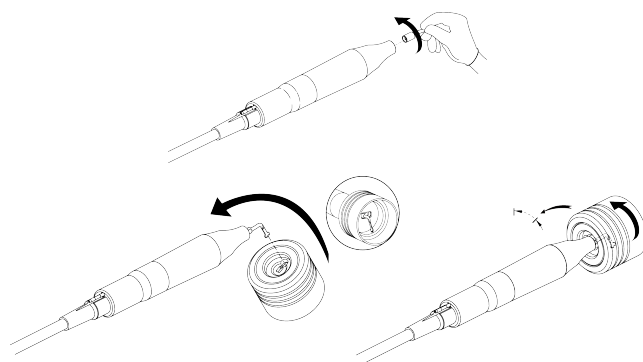
Sterilise prior to each use



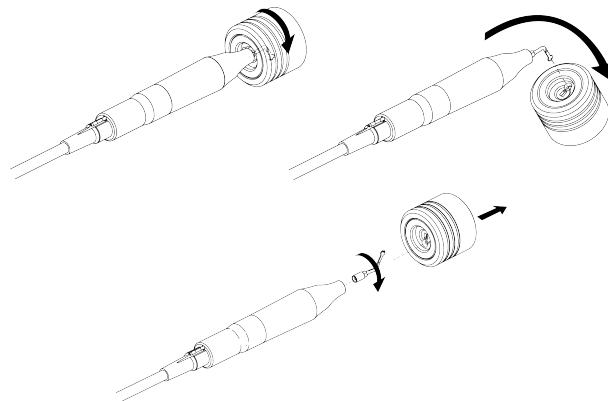
The tips must be cleaned, disinfected and sterilised prior to each use. Prior to each use, please refer to the cleaning, disinfection and sterilisation instructions for tips J02001.



## Installation



## Disassembly



## Manufacturer identification



SATELEC  
A Company of ACTEON Group  
17, avenue Gustave Eiffel  
BP 30216  
33708 MERIGNAC cedex  
France  
Tel. +33 (0) 556.34.06.07  
Fax. +33 (0) 556.34.92.92  
E.mail: [satelec@acteongroup.com](mailto:satelec@acteongroup.com)  
[www.acteongroup.com](http://www.acteongroup.com)



## Date of first CE marking

2009



The practitioner has to continually monitor the clinical site to immediately identify any heating risk

Tip | CE1 II | J01211 | (09) | V3 | 05/2018 | NO50EN260C

SATELEC S.A.S. | A Company of ACTEON Group  
17 av. Gustave Eiffel | BP 30216 | 33708 MERIGNAC cedex | FRANCE  
Tel. +33 (0) 556 34 06 07 | Fax. +33 (0) 556 34 92 92  
E-mail: [satelec@acteongroup.com](mailto:satelec@acteongroup.com) | [www.acteongroup.com](http://www.acteongroup.com)

Download



Instructions For Use

